



EAGLE EXPRESS



Phone: 413 423-3326

Internet – <http://www.erving>

September



Tuesday, September 18th

School Committee meeting 7pm

Wednesday, September 19th

11:30 Dismissal for Students

Due to Staff Development

No After School Program

PTO Mum orders due back at school

Monday, September 24th

PTO Mum's are in

Pick up time from 3:30-5:30

Friday, September 28th

Math Coffee Hour

8:30-9:30 in the conference room

Please note: September 19th is an early release day.

Dismissal at 11:30

No Lunch Served



**Nature's
Classroom**

6th Grade

September 17th - 21st

**Walking
Club**

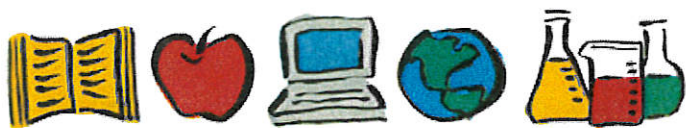
Erving Recreation Commission

The Erving Recreation commission has created a walking club. Be on the look out for additional information in the next Eagle Express.



*Calling All Parents & Guardians:
Help Keep Our Track Beautiful!
Mark Your Calendars Now!*

On Monday, Sept. 24, the EES PTO invites everyone in our school community to come to the track and help us keep the weeds out. **5:00-6:30 pm**--the more hands, the lighter the task. And if you pick up your mums afterschool and want to mosey on over to the track before 5 pm, you are welcome to do that too! Watch for a flyer in next week's Eagle Express



News from the Principal

Dear Families and Friends of Erving Elementary School,

Building strong relationships between school, home and our community is a critical factor in ensuring every student receives the support and guidance to become a successful learner, and contribute to our community in a positive and meaningful manner. Over the course of a school year, School Council members discuss ways in which our School Improvement Plan can focus attention on particular aspects that will increase school-home-community collaboration and communication. With this purpose in mind, the School Improvement Plan incorporates a collaborative partnership goal for the three-year cycle (2017-2020): The following points are taken from the School Improvement Plan, which can be viewed on our website: www.erving.com. Our office will be pleased to provide you with a hard copy of the plan if you would like to stop by the school.

Area for Improvement: Collaborative Partnerships - (X - Conditions for School Effectiveness)

Core Value: We believe the quality of adult relationships within a school community has the biggest impact on a school's ability to improve.

Goal: To improve professional capacity, relational trust, collaboration, and quality of instruction within the EES community.

Expected Outcome: Stronger adult relationships between school, families, and community partners will contribute to an increase in student learning and their social, emotional and physical well-being.

Please join me in finding ways to build on our great start to this school year. Our school is a wonderful place where great things happen every day. Please feel free to come in, arrange for a visit, tour the building, volunteer, and read to students,

the list is endless! On behalf of all of our students, we welcome your support, encouragement and time.

We are looking forward to seeing everybody at our Open House, which will be on Wednesday, October 3. The event will start in the gymnasium at 6:30pm. Teachers will be in attendance in the gym and will head to their classrooms following brief introductions.

Have a lovely weekend.

Sincerely,

Jim Trill

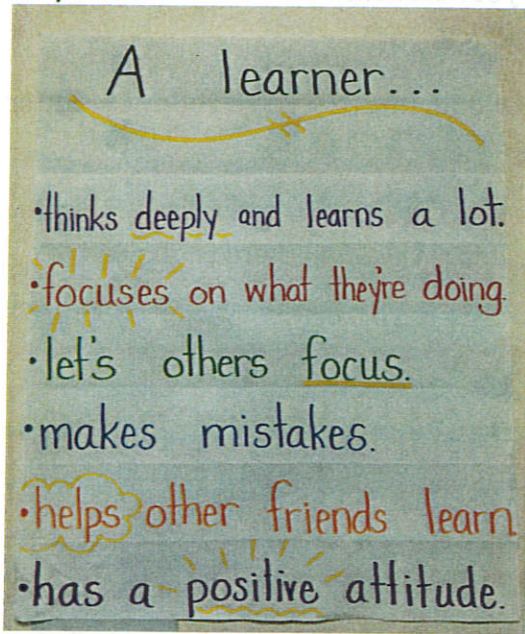


Second Grade is off to a super start!



These amazing kiddos have spent their first three weeks of school getting to know one another even better! We've played games, presented our "All About Me" bags, selected "just right" books for ourselves, and shared quite a few smiles! :o)

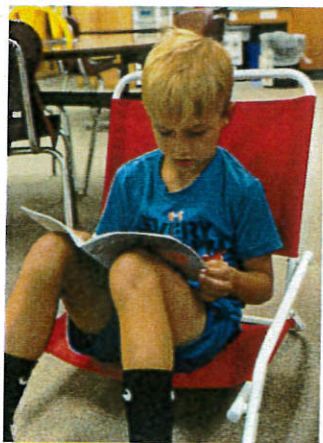
We started off our year discussing the jobs of a learner. These insightful 7 and 8 year olds created an impressive list! We have and will continue to utilize this list as a reminder of our continuous goal to strive toward learning new things together throughout our year.



Here's some evidence that we are off to a great start!



Determined readers...
Check out how focused they are.



Eagle Express Newsletter

Our Eagle Express can be sent to you in one of two ways,

1. Paper copy sent home each week with your student
2. Via Email (This document is seen in color ☺)

Please check off the below form with how you would like to receive your newsletter and return it back to school by September 21, 2018.

***Please note, if you already receive the newsletter via email there is no need to complete this form.

Tear along this line

() Please send a paper copy home with my student,

Name: _____ Grade: _____

() Please email a copy of the newsletter to the following,

1. _____

2. _____

3. _____

**Please return this form to Michelle Fisher in the Office, Thank you



Erving Elementary School, ID #40856

Dear Supporter:

Welcome back to the start of a new school year and to a new year of A+ School Rewards! This year's A+ Program runs from September 7, 2018 through March 16, 2019.

Our school Erving Elementary School, ID#: **40856** has the opportunity to participate in and earn **CASH** from A+ School Rewards, a great fundraising program run through your local Stop & Shop!

PLEASE NOTE:

You **DO NOT** need to re-register your card if your school selection(s) remains the same as last year.

New Supporters or Existing Supporters Wishing to Make Changes:

- Beginning *August 3, 2018*, visit stopandshop.com and select SIGN IN at the top right to log into your online account. Once logged in, select MY ACCOUNT, MANAGE MY ACCOUNT, then REWARDS & SAVINGS to select your school.
- If you do not have an online account, visit stopandshop.com and click **REGISTER**. Follow the prompts to create your online account. Once logged in, follow the instructions listed above.
- You'll need your 13-digit STOP & SHOP CARD number and the School ID # OR, if you need assistance call 1-877-366-2668 OPTION #1

To Earn Points:

- Use your registered STOP & SHOP CARD each time you shop at any Stop & Shop, and you will earn CASH for our school. You can confirm your school selection by logging into your account.
- At the end of each month, your points are calculated and converted to CASH rewards. These CASH rewards for our school are updated monthly. You can track our progress when you sign in to your online account.
- Our school will receive one CASH rewards check at the end of the program and can use this cash for any of our educational needs.

Also, please encourage your family members and friends to support our school. This could result in more CASH REWARDS!

Thank you for supporting our school.

Sincerely,

Michelle Fisher

1-877-275-2758

stopandshop.com/aplus

askaplus@cranecommunications.com



2018-2019

OUR SCHOOL: Erving Elementary School

OUR ID# 40856

A+ REWARDS PROGRAM 9/7/18 – 3/16/19

REWARDING YOUR SCHOOL IS STILL AS EASY AS 1-2-3!

GET STARTED AT STOPANDSHOP.COM

FOR ASSISTANCE CALL 1-877-366-2668 OPTION #1

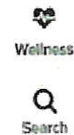
1) Register for an online account or sign in to an existing one



Savings

Shop

Savory
Fast, Fresh & Easy™



2) Access your account settings



Manage Your Account



Rewards & Savings

3) Select your preferred school(s) to reward

Account Profile

Rewards & Savings

Preferred Store



Gas Rewards

\$0.00

Off per gallon

0 Gas Rewards points

[View Details](#)



Available Programs
A+ School Rewards

Register your Stop & Shop Card &
earn A+ School Rewards points
every time you shop.

[Select School\(s\)](#) | [Learn More](#)

EES FALL MUM FUNDRAISER TO BENEFIT ALL CLASSES! Thanks for your support!

Student's name:

Student's classroom teacher:

Parent/Caregiver contact:

Primary phone:

Email:

Name	Contact Info	Color	Quantity	Unit Price	Amount
	Orders due back to EES by Wednesday, September 19 th ! Flower arrival & pickup: Monday, September 24 th - 3-5:30pm!	Mill River Farm Market Options: white, purple, yellow, red, daisy, and rust		All mums \$8/each	
○					
○					
○					
○					
○					
○					
○					

Total

September - Lunch 2018

Alternative	Monday	Tuesday	Wednesday	Thursday	Friday	Salad Bowl
Sun butter & jelly w/fruit & veg of the day & milk	3 Labor Day No School	4 Chicken filet on a wg roll, sweet potato fries, fresh melon	5 All beef hot dog on a wg roll, baked beans, fresh apple & milk	6 Ham & cheese bagel melt, oven potato, mandarin oranges & milk	7 Pizza Friday - cheese or pepperoni, wax beans, diced peaches & milk	Fresh romaine salad w/chicken, chick peas, fruit & veg of the day & milk
	10 Garlic breadsticks w/marinara sauce & parm cheese, yogurt, broccoli, diced peaches & milk	11 Meatball grinder on a wg roll, sweet potato fries, diced pears & milk	12 Chicken fajita w/sour cream, salsa, cheese, corn & black bean salad, pineapple & milk	13 Chicken patty on wg roll, oven potato, mandarin oranges & milk	14 Pizza Friday - cheese or pepperoni, green beans, pineapple & milk	Caesar chicken salad w/parm cheese, kidney beans, fruit & veg of the day & milk
	17 WG pasta w/meat sauce, steamed broccoli, fresh apple & milk	18 Toasted cheese & tomato soup, orange wedges & milk	19 Early Release No Lunch Served	20 Salisbury steak & mashed potato w/a homemade roll, mandarin oranges & milk	21 Pizza Friday - cheese or pepperoni, wax beans, diced peaches & milk	Southwest salad w/fajita chicken, black beans & corn, salsa, tortilla chips, fruit & veg of the day & milk
	24 Chicken nuggets & brown rice, seasoned broccoli, fresh melon & milk	25 Turkey & cheese grinder, sweet potato fries, diced pears & milk	26 Nacho's w/ground beef & cheese, three bean salad, diced peaches & milk	27 Hamb/cheeseburger, oven potato, pineapple & milk	28 Pizza Friday - cheese or pepperoni, green beans, fresh apple & milk	Greek salad w/chicken, black olives, chick peas, fruit & veg of the day & milk

All sandwiches are made using whole grain bread, salad is served with a whole grain breadstick & whole grain croutons. Each meal is served with a choice of 1% white, skim, 1% choc or fat free strawberry milk. Water is available during meal, but must be taken in addition to milk. All meals are subject to change without notice. All salads are served with a protein such as yogurt, meat/meat alternative, cheese or egg. Salad is made with romaine lettuce. \$.50 for milk w/home lunch

THIS INSTITUTION IS AN EQUAL OPPORTUNITY PROVIDER

September- Prek & K Lunch 2018

Alternative	Monday	Tuesday	Wednesday	Thursday	Friday	Salad Bowl
Toasted cheese w/fruit & veg of the day & milk	Labor Day No School	No Prek Classes or Kindergarten	All beef hot dog on a wg roll, baked beans, fresh apple slices & milk	Ham & cheese bagel melt, oven potato, mandarin oranges & milk	Pizza Friday - cheese or pepperoni, steamed wax beans, chilled diced peaches & milk	Fresh romaine salad w/chicken, chick peas, fruit & veg of the day & milk
Mac & cheese w/fruit & veg of the day & milk	Garlic breadsticks w/marinara sauce & parm cheese, yogurt, broccoli, diced peaches & milk	Hamb/cheeseburger on a wg roll, oven potato, pineapple & milk	Chicken fajita w/sour cream, salsa, cheese, corn & black bean salad, pineapple & milk	Chicken patty on a wg roll, oven potato, fresh orange wedges & milk	Pizza Friday - cheese or pepperoni, seasoned green beans, fresh fruit	Chicken Caesar salad w/parm cheese, kidney beans, fruit & veg of the day & milk
Chicken noodle soup w/cottage cheese & wg crackers, fruit & veg of the day & milk	Chicken filet on a wg roll, sweet potato fries, fresh melon & milk	Pasta w/meat sauce, carrot coins, orange wedges & milk	Early Release No Lunch Served	Salisbury steak & mashed potato w/a homemade roll, mandarin oranges & milk	Pizza Friday - cheese or pepperoni, steamed wax beans, diced pears & milk	Southwest salad w/fajita chicken, black beans & corn, salsa, tortilla chips, fruit & veg of the day & milk
Bagel w/cream cheese, turkey slices, yogurt, fruit & veg of the day & milk	Chicken nuggets & brown rice, seasoned broccoli, fresh melon & milk	Turkey & cheese wrap w/sweet potato fries, diced pears & milk	Nachos w/ground beef & cheese, three bean salad, diced peaches & milk	Toasted cheese sandwich, oven potato, pineapple & milk	Pizza Friday - cheese or pepperoni, green beans, fresh fruit & milk	Greek salad w/chicken, black olives, chick peas, fruit & veg of the day & milk

All sandwiches are made using whole grain bread, salad is served with a whole grain breadstick & whole grain croutons. Each meal is served with a choice of 1% white, skim, 1% choc or fat free strawberry milk. Water is available during meal, but must be taken in addition to milk. All meals are subject to change without notice. All salads are served with a protein such as yogurt, meat/meat alternative, cheese or egg. Salad is made with romaine lettuce. \$.50 for milk w/home lunch

THIS INSTITUTION IS AN EQUAL OPPORTUNITY PROVIDER

TALK, READ, & PLAY

Help build the foundation for your child's learning with this **FREE** home visiting program.

Families with young children newborn - 2 years of age are invited to take part in this program.



Participants will receive-

FREE books, toys and learning materials

- Help your child be ready for school
- Share this information with a friend in Erving, Leverett, New Salem, Wendell, or Shutesbury who has a child under 2 years-of-age.

FREE!

When Children Talk, Read, & Play they build skills that prepare them for a lifetime of success.

Questions??

Call 978-544-5157 and ask about the Talk, Read, & Play Program.

This program is made possible with the support and special thanks to the Friends and Family of Frank "Michael" Sokolosky and with collaboration from the CFCE grant through the Department of Early Education and Care, the Union #28 Community Network for Children Program and community donations.





Union #28 Schools Community Network for Children PROGRAM SCHEDULE

July 1, 2018 - June 30, 2019

Call 978-544-5157 for more info or
Find us on Facebook

All programs suitable for newborns through preschool age.

Combination of free play, music, movement, books, and nursery rhymes at all programs! Come join us!

	FRIDAY SUMMER Outdoor PLAYGROUP Northfield 10:00-12:00pm	MONDAY Shutesbury TALES & TUNES 9:30 - 11:00am Katie T.	TUESDAY New Salem PLAYGROUP 8:45 - 10:15am Emily J.	WEDNESDAY Erving PLAYGROUP 10:00 - 11:30am Emily J.	WEDNESDAY Wendell PLAYGROUP 10:00 - 11:30am Sylvia W.	WEDNESDAY Leverett TALES & TUNES 10:30 - 12:00pm Heleen C.	FRIDAY Shutesbury PLAYGROUP 8:45-10:15am Joie C.	SUNDAY Erving Family Playtime 10:00- 11:30 Gillian B.
JULY	13, 20, 27	2, 9, 16, 23, 30	NONE	NONE	11, 18, 25	11, 18, 25	NONE	NONE
AUG	3, 10, 17	6, 13, 20, 27	NONE	NONE	1, 8, 15, 22, 29	1, 8, 15, 22, 29	NONE	NONE
SEPT	X	10, 17, 24	11, 18, 25	12, 19, 26	5, 12, 19, 26	5, 12, 19, 26	14, 21, 28	NONE
OCT	X	1, 15, 22, 29	2, 9, 16, 23, 30	3, 10, 17, 24, 31	3, 10, 17, 24, 31	3, 10, 17, 24, 31	5, 12, 26	14
NOV	X	5, 19, 26	6, 13, 20, 27	7, 14, 28	7, 14, 28	7, 14, 28	2, 9, 16, 30	4
DEC	X	3, 10, 17	NONE	5, 12, 19	5, 12, 19	5, 12, 19	NONE	2
JAN	X	7, 14, 28	8, 15, 22, 29	2, 9, 16, 23, 30	2, 9, 16, 23, 30	2, 9, 16, 23, 30	4, 11, 18, 25	20
FEB	X	4, 11, 25	5, 12, 26	6, 13, 27	6, 13, 20, 27	6, 13, 20, 27	1, 8, 15	10
MAR	X	4, 11, 18, 25	5, 12, 19, 26	6, 13	6, 13, 20, 27	6, 13, 20, 27	1, 8, 15, 22, 29	17
APR	X	1, 8, 22, 29	2, 9, 23, 30	10, 24	3, 10, 17, 24	3, 10, 17, 24	5, 12, 26	28
MAY	X	6, 13, 20	7, 14, 21, 28	1, 8, 15, 22, 29	1, 8, 15, 22, 29	1, 8, 15, 22, 29	3, 10, 17, 31	19
JUNE	X	3, 10, 17, 24	NONE	NONE	5, 12, 19, 26	5, 12, 19, 26	NONE	NONE
Northfield Mt. Recreation & Environmental Center 99 Millers Falls Rd. Northfield, MA		M.N. Spear Memorial Library 10 Cooleyville Rd. Shutesbury, MA 413-259-1213	Swift River School 201 Wendell Rd. New Salem, MA 978-544-5157 (CNC Office #)	Erving Elementary School 28 Northfield Rd. Erving, MA 413-423-3326	Wendell Library 7 Wendell Depot Rd. Wendell, MA 978-544-3559	Leverett Library 75 Montague Rd. Leverett, MA 413-548-9220	Shutesbury Elementary School 23 West Pelham Rd. Shutesbury, MA 413-259-1212	Erving Elementary School 28 Northfield Rd. Erving, MA

Please note: Ongoing programs may not occur during school vacations or holidays. Please check the schedule!

If inclement weather is a concern, call the CNC office for message/update, check Facebook or the CNC Website for info.

These programs are supported in part by grant funds from The Massachusetts Department of Early Education.

These programs are also supported by the Friends of the M.N. Spear Memorial Library, Friends of the Leverett Library, Friends of the Wendell Free Library, Shutesbury Elementary School, Erving Elementary School, Swift River School, and donations from friends in the community.

7/30/2018





Northampton Area Pediatrics, LLP Parenting Workshop

How to Teach (and Learn From) Our Kids About Sex

Dr. Fleishman will lead a discussion on how our kids are learning about sex, what resources they are using other than their parents, why it is important to talk with our kids about this topic, what those talks should sound like, and when they should take place.

**Sunday, September 30th
4:00 p.m. to 5:30 p.m.
193 Locust St., Northampton**

RSVP by calling 413-517-2226 or email contactus@napeds.com
Parenting workshops are open to the community and free of charge.